

Growing with Partners

---



# Hydron's New Energy Product Range

# New Engery Product

## City bus Electric



V6  
6/6.7/7.5m



8.5m



10.5m



12m



18m

## Products Electric and Hydrogen

## Coach Electric



8.2m/8.9m



11m



12m

## Hydrogen



12m City



12m Coach

# City Bus Electric

## City bus- 6m electric



Main Specification	
Model	LCK6606VG
L*W*H	6045*2095*2790mm
Wheelbase	3880mm
Max. Speed	70km/h
Battery	LFP 89.2kwh/ 1 step 200km range 70.2/105.3kWh 2 step 160/230km range
Suspension	Front 3 rear 3 leaf spring
Passenger Capacity	10-16/32



Airport and metro connection



Short distance public transportation on narrow road

### Application Scenarios



Short distance transit on narrow road

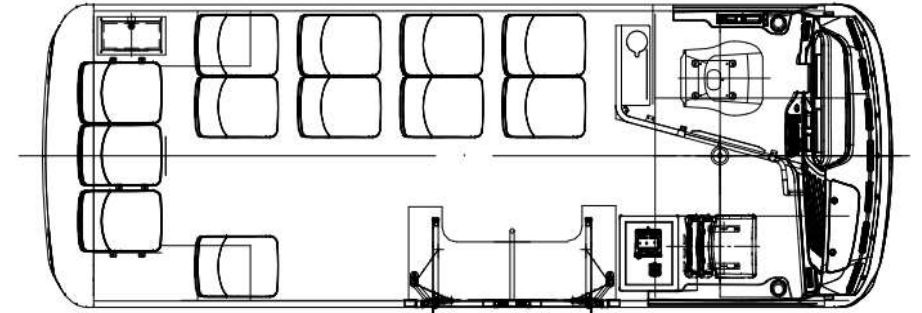


Tourist site transit



# City Bus Electric / Hydrogen

City bus -6m electric one / two step



13+1

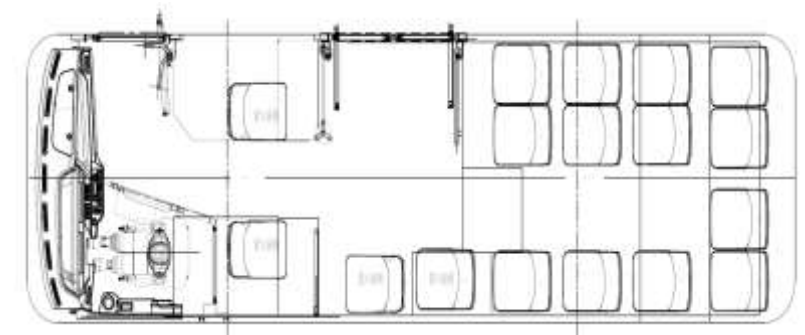


# City Bus Electric / Hydrogen

## City bus- 7.6m electric



Main Specification	
Model	LCK6606VG
L*W*H	7650*2095*3020mm
Wheelbase	3500
Max. Speed	70km/h
Battery	LFP 140.95kWh , low entrance. range 260km
Suspension	Air suspension Front independent
Passenger Capacity	13-18/47



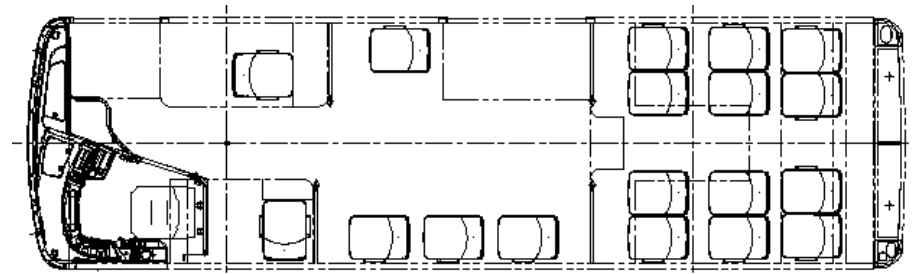
17+1

# City Bus Electric / Hydrogen

## City bus-8.5m



Main Specification	
Model	LCK6850EVG
L*W*H	8545*2435*3260mm
Wheelbase	4500mm
Max. Speed	70km/h
Battery/range	LFP 255.5kWh/300km
Suspension	Air suspension
Passenger Capacity	61/18+1



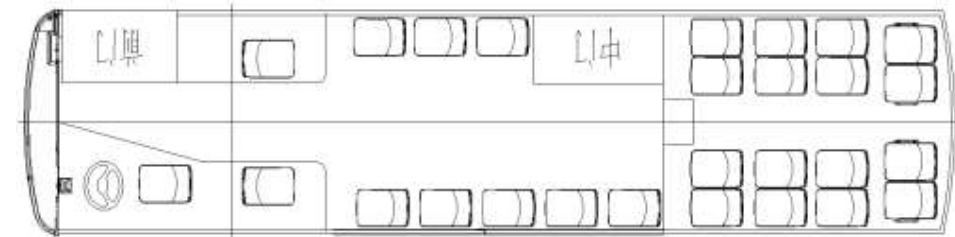
18+1

# City Bus Electric / Hydrogen

## City bus-10.5m



Main Specification	
Model	LCK6106EVG
L*W*H	10500*2550*3265mm
Wheelbase	5800mm
Max. Speed	70km/h
Battery/range	LFP 255.5/270kWh
Suspension	Air suspension



26+1

# City Bus Electric / Hydrogen

## City bus-12m



Main Specification	
Model	LCK6126EVG
L*W*H	12200*2550*3265mm
Wheelbase	6100mm
Max. Speed	70km/h
Battery/range	LFP 350kWh/280km
Suspension	Air suspension
Passenger Capacity	100 passenger

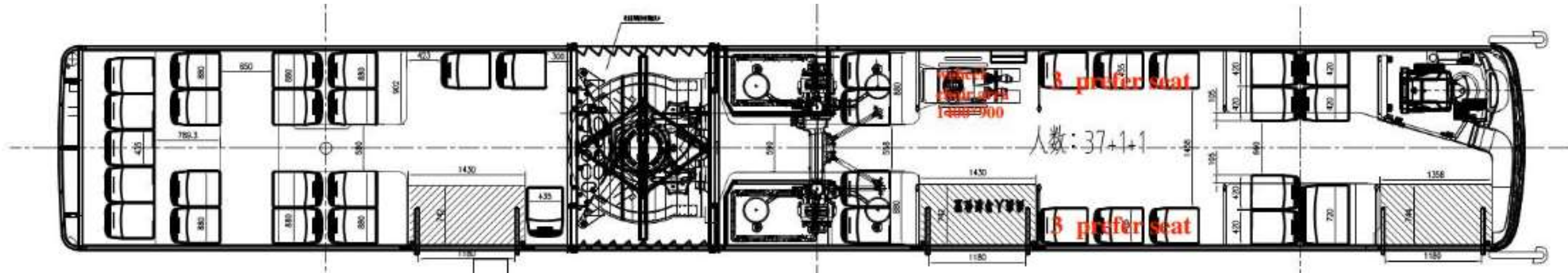


# City Bus Electric Hydrogen

## City bus-18m



Main Specification	
Model	LCK6180EVG
L*W*H	18000*2550*3430mm
Wheelbase	5900+6100mm
Max. Speed	70km/h
Battery/range	LFP 525kwh/260km
Suspension	Air suspension
Passenger Capacity	150/46+1

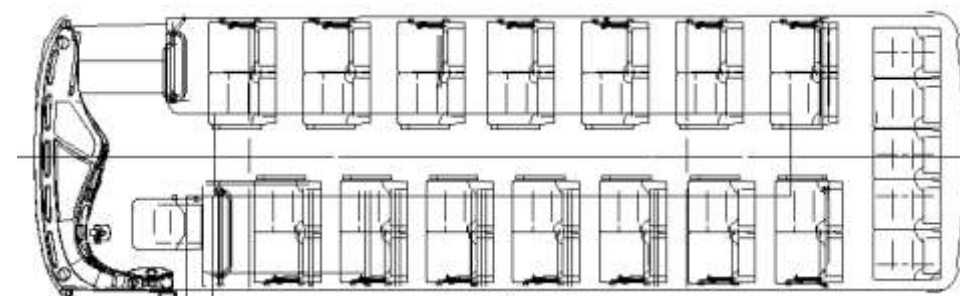


# Electric Coach Hydrogen

## Electric coach 8.2m



Main Specification	
Model	LCK6828EV
L*W*H	8245*2480*3355mm
Wheelbase	4250mm
Max. Speed	100km/h
Battery/range	LFP 157.5kwh/200km
Suspension	Air suspension
Passenger Capacity	24-36



# Electric Coach / Hydrogen

## Electric coach 8.9m



Main Specification	
Model	LCK6906EV
L*W*H	8980*2480*3355mm
Wheelbase	4985mm
Max. Speed	100km/h
Battery/range	LFP 350.07kwh/410km
Suspension	Air suspension
Passenger Capacity	24-40

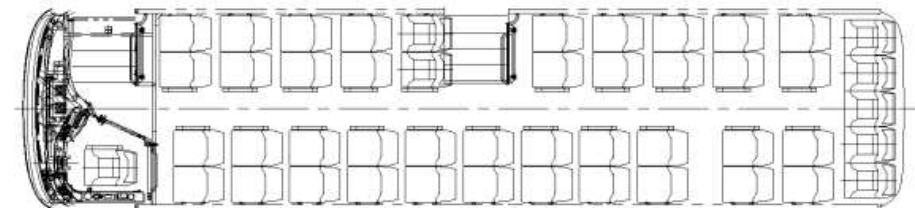


# Electric Coach Hydrogen

## Electric coach 11m



Main Specification	
Model	LCK611EV
L*W*H	11145*2500*3450mm
Wheelbase	5865mm
Max. Speed	100km/h
Battery/range	LFP 350.07kwh/340km
Suspension	Air suspension
Passenger Capacity	47



# Electric Coach / Hydrogen

Electric coach 12m



General	
Model	LCK6129EV
L*W*H	12000*2600*3730mm
Wheelbase	5800mm
Front/rear Overhang	2800/3380mm
GVW	18000kg
Max. Speed	100km/h
Chassis	
Battery /Driving range	LFP 422.9kwh/370km
Front Axle	6.5T
Rear Axle	13T
Suspension	Front 2 rear 4 air suspension
Steering	Integrated power steering
Braking	Dual circuit pneumatic system, front and rear disk, ABS/ASR/ESC
Tyre	295/80R22.5
Seats Capacity	49+1

# Hydrogen Only

Logistic



8.6m City



10.5m City



12m City



12m Coach



Cold chain logistic



# Hydrogen Coach

## Hydrogen coach



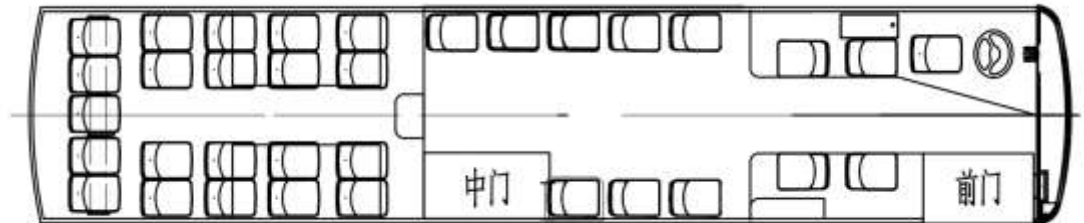
General	
Model	LCK6129FCEV
L*W*H	11830*2550*3695mm
Wheelbase	6050mm
Front/rear Overhang	2450/33300mm
Approach/Departure angle	9.5/9.5°
GVW	17500kg
Max. Speed	100km/h
Chassis	
Battery	LFP 105.28kwh
Motor	Weichai
Max power/torque	350kW/2800NM
Fuel cell power/capacity	105.28KWH
Front Axle	6.5T
Rear Axle	11.5T
Suspension	Front 2 rear 4 air suspension
Steering	Integrated power steering
Braking	Dual circuit pneumatic system, front and rear disk, ABS/ASR/ESC
Seats Capacity	49+1

# Hydrogen City Bus

## Hydrogen city bus



General	
Model	LCK6126FCEV
L*W*H	12000*2550*3450mm
Wheelbase	6100mm
Front/rear Overhang	2650/3250mm
GVW	18000kg
Max. Speed	70km/h
Chassis	
Battery	LFP 105.28kwh
Motor	Weichai
Fuel cell power/capacity	65kw/8*140L
Suspension	Front 2 rear 4 air suspension
Steering	Integrated power steering
Tyre	275/70R22.5

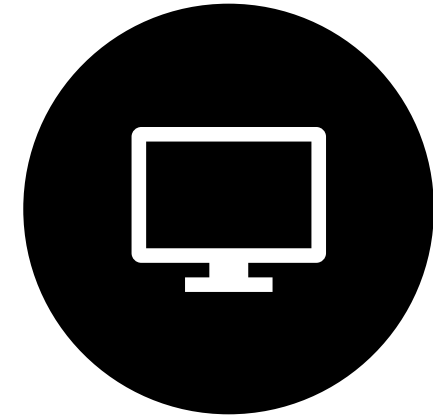






**GROWING WITH  
PARTNERS**

THANK YOU FOR YOUR  
ATTENTION



WEBSITE:  
[WWW.HYDRONNRG.COM](http://WWW.HYDRONNRG.COM)